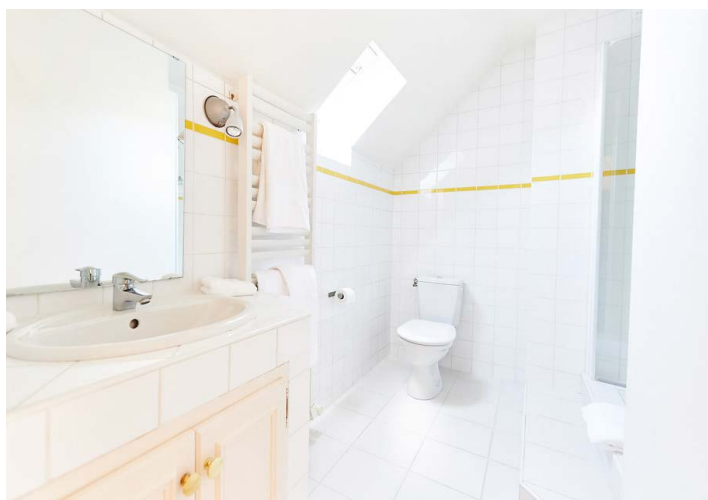
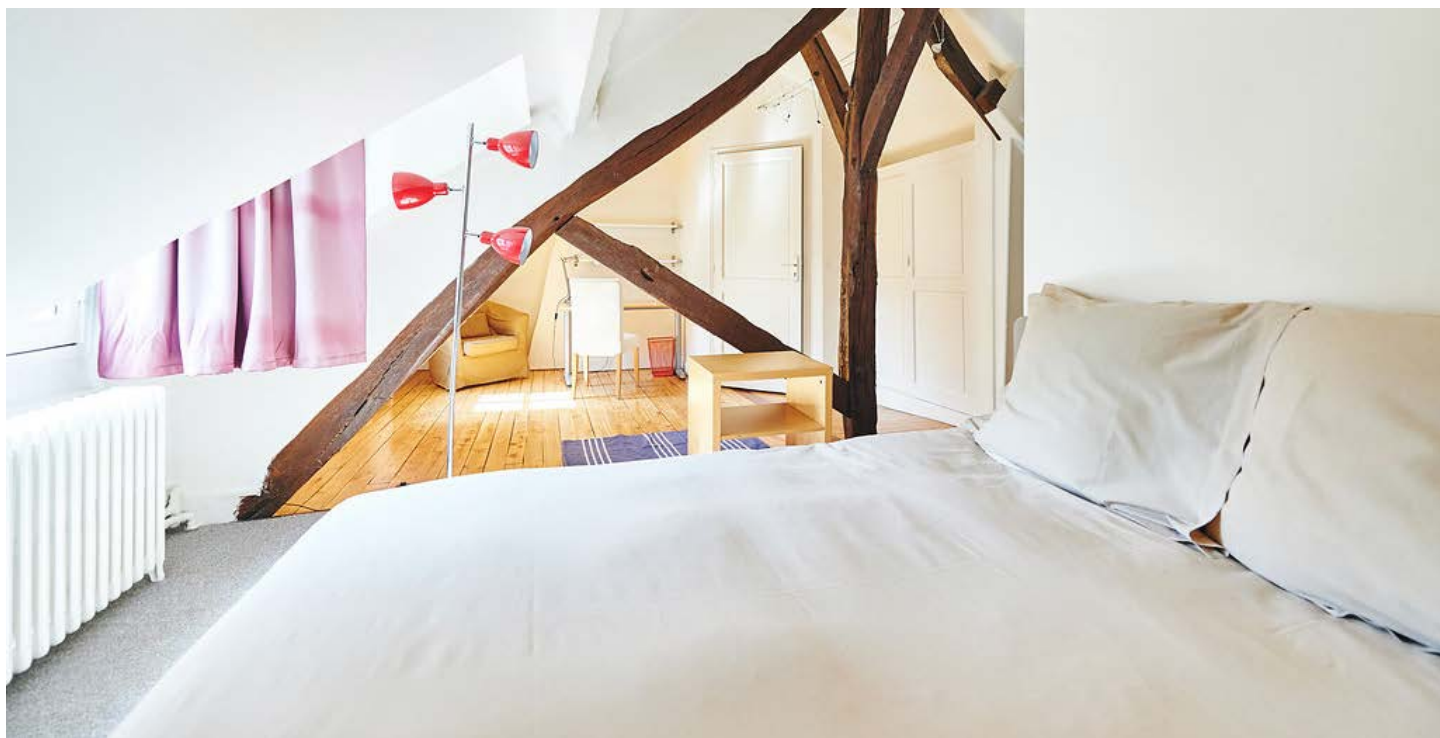




l'Arbre Sec House

Fontainebleau



ROOM 3

The house attic bedroom has wood decorative beams that divide the space in two, one to study and the other to sleep.

- Second floor, street view
- Attic with wooden beam
- S-Queen size 140 x 190 cm comfortable bed with one bedside table, lamp, carpet floor in the sleeping area, 2 set of linen
- Private en-suite shower bathroom with toilets, 2 set of towels
- Large desk with desk lamp, 2 large office shelves for books and files
- Large wardrobe with shelves & 2 hanging wardrobes
- Wood floor and carpet
- ADSL Wifi
- 28 sqm



AMENITIES

INSEAD AT WALKING DISTANCE



On foot:
8 min. walk



By bike:
4 min. ride



By car:
2 min.

HOUSE AMENITIES



The full rental package comprises house insurance, all utilities (gas, electricity, heating, water), bed linens & towels



Housekeeper



Cleaning service 5 times a week



Handyman & gardener 4 mornings per week, we deal with any repairs in the house (light bulbs etc ...)



Fully equipped facility, 1 large laundry room with 2 washing machines, 2 dryers, 1 ironing board, 1 steam iron, 1 guest powder room



Bicycles

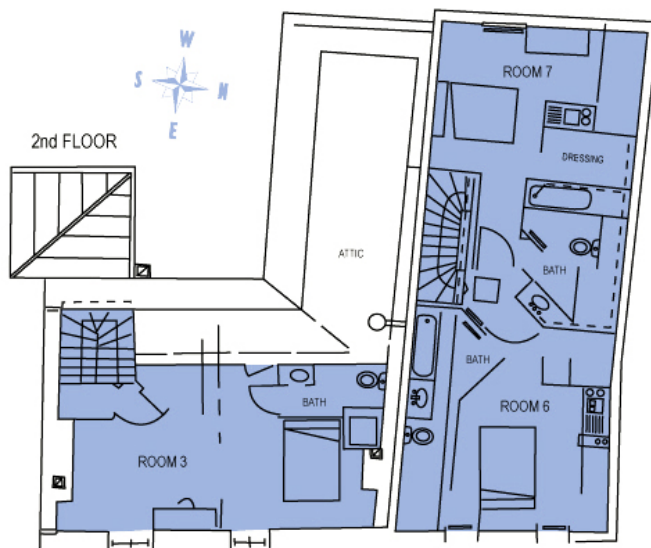


Free parking on the street

OPTIONAL



Ironing, laundry, dry-cleaner, Airport shuttle service



MULTIMEDIA FACILITIES



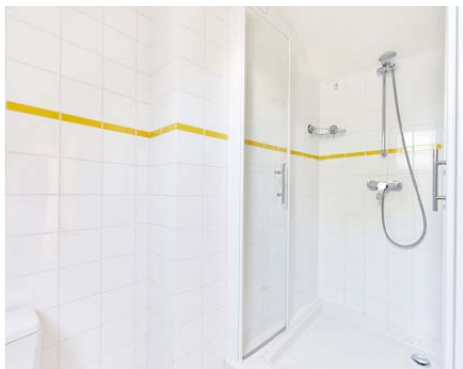
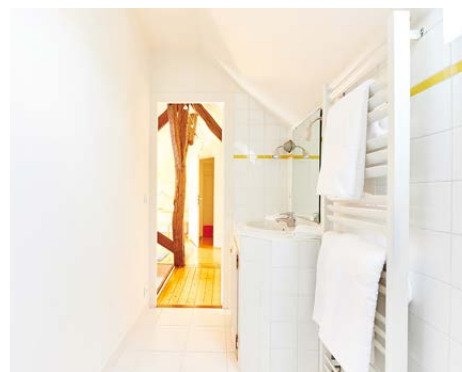
Wifi: 2 high speed dedicated lines with fastest ADSL speed available in town, 2 times 18 Meg, unlimited high speed WIFI access from 7 hot spots wifi terminals



Wifi assistance: 5 days a week contractual technical assistance by a local computer company, on-site support as needed



Flat screen TV comes with international channels by satellite



THE HOUSE

